



A monthly publication of AAUW, San Francisco, est. in 1886

www.aauwsf.org

May 2013

President's Message

Pay Equity is a Public Policy priority for AAUW and all Branches were encouraged to mark Equal Pay Day on April 9th to ensure that the topic received attention and AAUW's research and findings on the subject were circulated. Check out the details on how AAUW-SF marked the occasion later in this issue.



Cathy Corcoran, President AAUW-SF, Dr. Emily Murase, Executive Director, Department on the Status of Women, Supervisor Malia Cohen at City Hall on April 9, 2013 to mark Equal Pay Day.

Dr. Emily Murase, Executive Director of the Department on the Status of Women, invited AAUW-SF to participate in the rally for Pay Equity held on the steps of City Hall on April 9th. It was a lively event and featured speakers including Board of Supervisors President David Chiu and Supervisor Malia Cohen. I was happy to represent the branch and took the opportunity to distribute AAUW brochures on the Pay Gap to those in attendance. During my remarks, I shared the fact that AAUW has been on the front lines of the fight for pay equity for over a hundred years, was there fifty years ago in the Oval Office when President John F. Kennedy signed the Equal Pay Act, and was there four years ago when President Barack Obama signed the Lilly Ledbetter Fair Pay Act. With more still to be done to ensure Pay Equity for all, AAUW will continue to be there to provide up-to-the-minute research to keep this important public policy matter in the media and on the radar of our legislators. Pay Equity is only fair.

All AAUW members are eligible to vote in the 2013 AAUW Election. Voting began on April 15th and ends on June 10th. The ballot includes proposed changes to the AAUW Public Policy Program, one proposed amendment to the AAUW Bylaws and candidates for the AAUW Board of Directors. You can check out details in the Spring/Summer issue of *Outlook* magazine or in the voter guide online <http://www.aauw.org/resource/2013-aauw-national-election-voter-guide/>

You should have received by email details on how to vote online by going to www.aauw.org and clicking on the VOTE button. The email will have included your member ID, and your voter PIN. If you have any questions about the voting process, email connect@aauw.org or call 800.326.2289.

Finally, I have been visiting family in Ireland and was invited to speak about AAUW at the monthly meeting of the local branch of BPW (Business and Professional Women). I will share details about the event in the June issue of *Avanti*.

Cathy Corcoran
President

Board Meeting

This month's board meeting will be held on Wednesday, May 15th, 6:30 p.m., for potluck, with meeting to start at 7 p.m. at Marilyn's Leal's home, 4325 19th Street. All members are invited. RSVP Marilyn at 626-4110.

Save the Date: Installation Luncheon

The installation of AAUW-SF Officers for 2013/2014 will be held on: **Saturday, June 15th 2013, time and location TBD.**

International Book Group

Date & Time: **Monday, May 20 at 7 PM**

Book/Author: **THE CONFIDANT** by Helene Gremillon

Hostess: Sheila Bost, 19 Wawona Ave. Please RSVP to Sheila at 415-664-4985

Afternoon With Books

Date & Time: **Friday, May 17 at 1:30 PM**

Book/Author: **BEAUTIFUL RUINS** by Jess Walter

Hostess: Marilyn Leal, 4325 19th Street. Please RSVP to Marilyn at 415-626-4110

Mystery/Adventure

Date & Time: **Thursday, May 23 at 7:30 PM**

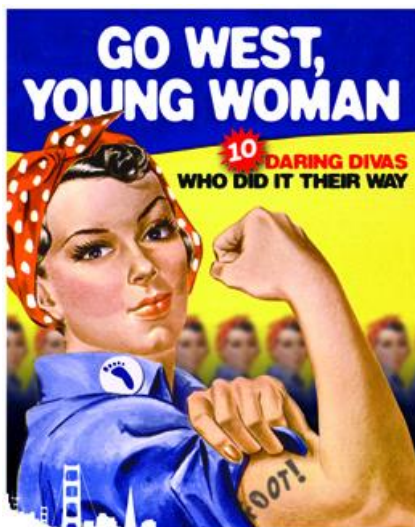
Book/Author: **THE BIRD ARTIST** by Howard Gordon

Hostess: Pat Camerena, 157 Amber Dr.

Reviewer: Elaine Butler

RSVP: Pat at 415-285-7589

Go West, Young Woman, AKA The Diva Tour



Go West. Young Woman: Ten Daring Divas Who Did It Their Way is a two hour walking tour by, for and of the ladies. With a ratio of 56 men to each woman in 1849, San Francisco was only for the women who were strong of mind or strong of body. On this diva-led tour, we'll cover ten wild women who left their legacy on San Francisco Landscape from Isadora Duncan to Maya Angelou to Lillie Coit. You'll even learn about Phyllis Diller, who challenged women of her time with this:

"Do you grab for all the gusto you can get? Or is it impossible because your hand is covered with an oven mitt?"

Go West, Young Woman discusses the biographies of 10 important San Franciscan women and examines the history of The City through their unique perspectives.

This tour also addresses the sexism, racism and classism that these strong women faced and eventually overcame.

Other wild women include Alma de Bretteville Spreckels, Mary Ellen Pleasant, Lotta Crabtree, Ah Toy, Donaldina Cameron and Julia Morgan.

Saturday, May 11, 2013 1 – 3pm

This easy walk will take you through a San Francisco you never imagined!

Cost: \$20

RSVP to Roberta Guise, 5214F Diamond Heights Blvd. #223, San Francisco, CA 94131

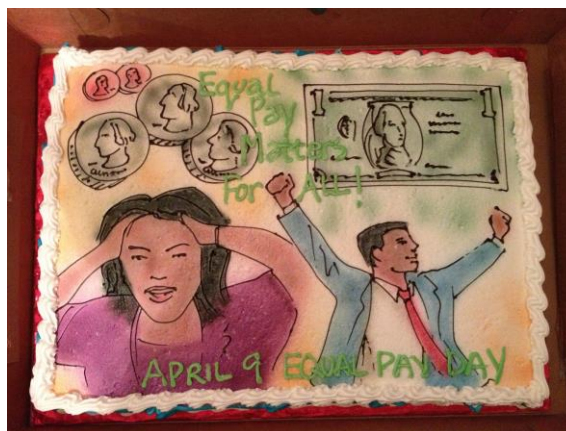
roberta@guisemarketing.com

415-420-6276

Travel Group

The African Violet Society has some room on their vans to take us if we would like to join them on a trip to Filoli. The date is **May 25th** and the leaving time is to be determined at our next meeting. So if you are interested please call or email Elaine Butler elainebutler124@comcast.net, 826-3172 or Adrienne Kristine, Adrienne.Kristine@gmail.com, 307-5775. Space is limited so call or email soon.

Public Policy Notes



To commemorate Equal Pay Day, which fell on April 9 this year, we took our message in the form of an

Equal Pay Day cake, AAUW 2013 pay gap reports, and comments during the public comment period at the joint meeting of the San Francisco Commission on the Status of Women and the Small Business Commission.

President Cathy Corcoran presented AAUW and our branch to the commissioners; Andrea Laudate (cake ringleader) and Elaine Butler (intrepid support team) held the cake up for the commissioners to see; and I presented details about the pay gap issue.

The pay gap reports were popular. The cake upstaged the reports — it was a chocolate cake, you see: Attendees inhaled it, eager to claim their fair share.

Before AAUW-SF took over the commission meeting, speakers included a founder of La Cocina, an enterprise that helps low-income “food entrepreneurs,” mostly women, start their business by providing affordable and convenient commercial kitchen space.

And the Women’s Initiative provides high potential, low-income women with business training, funding and support to start their own business and become economically self-sufficient.

We learned that child-care is one of the biggest obstacles that women entrepreneurs face.

Gender Equality Challenge

President Cathy Corcoran and I were invited to an April 15 press conference for the launch of the Gender Equality Challenge.

A project of the Department on the Status of Women’s *Gender Equality Principles*, businesses with more than 1,000 employees check gender equality in their respective companies against 7 guiding principles. Companies make a commitment to share their findings, and pay it forward by mentoring another company on the principles.

Dr. Emile Murase, Director of the Department on the Status of Women, publicly acknowledged AAUW San Francisco as a partner during the meeting.

California AAUW Annual Meeting (at the State Capitol)

Barbara Spencer, Legal Advocacy VP and I represented the branch at the meeting. Barbara and AAUW Director and branch member Kathleen Cha teamed up as honorary flag bearers for the flag ceremony.

Our SF branch was publicly recognized for advancing Tech Trek to the presentation to the Commission on the Status of Women and Commendation from the San Francisco Board of Education.

Meeting highlights: Alicia Hetman, AAUW CA President, emphasized the need to bring in new, younger members, especially as our current members are “aging out.”

AAUW President Carolyn Garfein was special guest speaker. She reminded us that the AAUW slogan, “empowering women” means the “power to influence others.” She translated this as “the power to change lives and change laws.”

San Francisco Commission on the Status of Women monthly meeting

Along with other delegates to the UN last month, I had the honor to present to the commissioners my take-aways from the experience.

Upcoming Meetings

SF Commission on the Status of Women (regular meeting: meetings on 4th Wednesdays)

Wednesday, May 22

5-7pm

City Hall, Room 408

Stay informed!

To stay abreast of meetings around women’s, girls’ and families issues, and for reports from the Department on the Status of Women: sign up at <http://bit.ly/YfmkYf> (or San Francisco Department on the Status of Women, www.sfgov.org/dosw).

Roberta Guise

Co-chair, AAUW-SF Public Policy Committee

Undeterred Pat Camarena

Fortunately, there are in every generation, a number of larger than life characters who go through life fearlessly pursuing their goals. They are the undeterred ones. Inez Milholland was one of these people irrisolute in overcoming obstacles no matter what setbacks appeared in her path.

When Vassar allowed no on-campus discussion of women's suffrage issues, Inez held the meeting in a near-by cemetery. For this audacious act, Vassar suspended Inez. Undaunted after having her law school application rejected by such prestigious schools as Yale and Columbia because of her sex, Inez enrolled and graduated from NYU. Inez involved herself in union activities determined to help women live a full life unhampered by tradition. She was arrested for her participation in strikes by women's garment workers in New York. Spending some time in Europe prior to WWII, Inez served as a war correspondent until expelled for airing her pacifist views. Back in the United States once more, she further honed her outstanding ability to speak before large crowds and joined forces with the National Women's Party. On the evening prior to newly elected Woodrow Wilson's inauguration in 1913, Inez upstaged the festivities by appearing nearby in a women's suffrage demonstration wearing white flowing robes while riding a huge white horse. The media published the iconic picture of Inez on her steed, putting a public face on the women's movement. The Women's Party was to use Inez's picture extensively in their publications for years to come.

Inez began to travel widely undaunted by the ongoing war and the re-election of Wilson. Inez's activism was not limited to suffrage issues. She also campaigned for labor reform, the repeal of capital punishment, and equality for all classes and genders. Irresolute, she never lost hope. Her amazing ability to speak to large crowds led to her becoming the standard bearer for the drive to get a universal constitutional amendment guaranteeing women the right to vote. Unfortunately the rigorous campaigning took a deadly toll on her health. She died at the age of thirty without witnessing the outcome of her efforts. After her untimely passing,

the suffragists focused more on direct action, picketing and holding public demonstrations almost daily near the White House. Inez's iconic picture remained prominent in their literature. Congress passed the 19th. amendment less than five years later.

www.spartacus.schoolnet.co.uk
www.myhero.com
www.womenshistory.about.com

Avanti Articles

Please remember to submit Avanti articles to Corrine Sacks by the 25th of each month via email to: cpsacks@yahoo.com

Get the *Avanti* Faster

If you'd like to receive the Avanti via email notice rather than US mail, please tell the Membership VP, and then a printed copy will not be sent to you. If you prefer, we will continue to print and mail the Avanti to you.

Playing Now Paula Campbell

Neil LaBute's **reasons to be pretty**, now at the San Francisco Playhouse is both an interesting character study of our culture's obsession with physical beauty and a searing indictment of the lack of emotional maturity of a whole sub class of uneducated, blue collar people.

The play opens in an energetic, fast paced scene as Stephanie (Lauren English) has a temper tantrum which includes the use of filthy language and much jumping up and down on the bed, while Greg, (Craig Marker) her boyfriend, tries to defend himself. Turns out that Greg, when asked by his friend Kent (Patrick Russell) how pretty he thinks Stephanie is, describes her as "regular." And how did Stephanie find this out – because her friend Carly (Jennifer Stuckert) who is Kent's wife, immediately phoned to tell her. Sounds a lot like Junior High School, doesn't it? It becomes very

clear that all four of these characters behave like teens, think like teens, act like teens. Not an adult among them though probably none is under age 30!

The four betray each other, fight over trivialities, and pretty much indulge every whim and desire with not a thought for the consequences of their actions on each other. Greg slowly changes – it's a delight to watch him mature as he begins to understand and reject the awful things that his friends are doing to each other. When he finally refuses to cover for Kent's cheating on his pregnant wife, when he rebuffs the newly engaged Stephanie's overtures, when he warns Carly to be careful – Greg is finally becoming a full adult.

All four performers are outstanding, Susi Damilano's direction is spot on, and Bill English's revolving set is up to his usual standard – genius!

I probably should say that the friends I saw the play with were not nearly as enthusiastic. They felt it was a play for younger people, but that's not true. It's not *for* younger people, it's *about* younger people. We live in a society full of people of all ages, social classes, races, etc. To think that in order for us to relate to a play it should have characters like us is the narrowest sort of thinking and exactly the opposite of what theatre is supposed to do for us. We should welcome new experiences in theatre, not expect it to reflect us like a mirror.

Reasons to be pretty is interesting, thought provoking, entertaining, and in general great night at the theatre. See it!

reasons to be pretty, through May 11. Tues-Wed-Thurs 7pm Fri/Sat 8pm, Sat 3pm, and Sun 2pm. San Francisco Playhouse 450 Post Street (2nd Floor of Kensington Park Hotel) between Mason and Powell, Box Office 415.677.9596 fax: 415.677.9597 online sfplayhouse.org (click BUY)

Don't miss Berkeley Rep's innovative, creative production of Shakespeare's **Pericles, Prince of Tyre**. Pericles is a serious play, which begins with the foulest of crimes, incest, and concludes, after much sturm and drang, and suffering, with the happy reunion of Pericles, and the wife and daughter he thought dead. This production is the

opposite of serious – light hearted and engaging at every turn. Director -- Conceiver Mark Wing-Davey turns Shakespeare inside out in this rollicking show. He combines or omits characters, changes language, cuts scenes, and uses costuming and sets from different periods and places. The stage is often awash, literally soaking wet, during many of the scenes of shipwreck and storms at sea. David Barlow, as Pericles, is literally hosed down more than once. There's slapstick, simulated sex (on a bed set on bouncing springs), costumes that range from a gold checked cloak (a ringer for the one in Gustav Klimt's famous painting *The Kiss*) to a natty brown vested, porkpie hated, saddle shoed pimp outfit (Sportin' Life in Porgy and Bess anyone?). Add music by composer and musical director Mark Gwinn that moves from emphatic percussive beats to gently lullabies, to suspenseful background, that is alternately threatening, soothing, scary, and downright hilarious, and you've got a recipe for success.

This production is a wild ride that you won't want to get off and that ends all too soon. The two and a half hours fly by – it seems almost indecent to have this much fun with Shakespeare. This is Shakespeare the way the bard himself would have enjoyed – head over to Berkeley and enjoy it yourself.

Pericles, Prince of Tyre, through May 26. Tues – Sat 8pm, Sun 7pm, Sat Sun 2pm. Berkeley Repertory Theatre, 2025 Addison St, Berkeley CA 94704. Box office: 510 647-2949 online <http://tickets.berkeleyrep.org/>

May Birthdays

Lois Roberts	May 15
Diane Scott	May 19

Birthday Not Announced?

If your birthday is not there and you'd like to have it included (or corrected), contact the Membership VP.

Tech Trek Report

We will be sending our quota of 15 girls again this year. It was iffy for a while but you all came through for the program. There will be 5 girls going to Sonoma State Camp in June and 10 to Stanford camps in July. So congratulations to members of the San Francisco Branch. I am thrilled that the program has received much positive publicity and even awards this year. Thank you to Roberta Guise for marketing our wonderful program. The Commission on the Status of Women and the San Francisco School Board wouldn't know about us without your work. We also appreciate all the alums, who came back to assist in the interviews and Nora Lee, a new member for agreeing to do a fundraiser and outreach to middle schools.. There are so many of you that help every year.

Congratulations to our extraordinary Tech Trek Alum - Michelle Wong! She is chosen as a Junior Counselor for Camp Marie Curie at Stanford this summer. It is a very competitive position.

April Donors - THANK YOU!
The Soroptimist International - San Francisco

Tech Trek Camp Send-Off Party!

Sunday, June 2, 2013
3:00 PM — 5:00 PM
Sports Basement,
1590 Bryant Street, San Francisco

Street parking is available. An under-ground garage can be accessed off Florida Street between 16th and Division.

RSVP:
Michelle Mammini at 346-9114
MMammini@pacbell.net
Elaine Butler at 415 826-3172,
ElaineButler124@Comcast.net

Michelle Mammini and Elaine Butler, Tech Trek San Francisco Branch Co-coordinators.

2012-13 Tech Trek Donation Form

I'm interested in sponsoring girls to go to Tech Trek 2012! I pledge the following amount towards sending girls to camp.

\$25 \$50 \$100 \$900 (1 girl) \$_____

Make checks payable to **AAUW-CA SPF**, with Tech Trek SF in the memo line.

Name: _____

Address: _____

Phone: _____ Email: _____

Mail your donation addressed to:

Elaine Butler & Michelle Mammini 124 Amber Dr., SF , CA 94131-1626; Elainebutler124@comcast.net

Membership Updates

If you change your address, kindly notify the Membership Chair.

AAUW Web Pages

News Page & Media Alerts: (use links on page to subscribe) www.aauw.org/

[About/newsroom/news/index.cfm](http://www.aauw.org/About/newsroom/news/index.cfm)

Actions to take: www.aauw.org/issue_advocacy/actionpages/index.cfm **Mission in**

Action: www.aauw.org/publications/mission/index.cfm

Two Minute Activities: capwiz.com/aauw/home.

US Congressional Voting Record

aauwaction.org/VoterEd/CVR.htm

State Directory

AAUW CA Directory is posted in searchable PDF format. Both documents can be found in the Forms & Documents section, under Branch Administration, [HERE](#). Hard copies of the directory are available for purchase. Send your request, with a \$10 check to AAUW CA Office, 1331 Garden Hwy, Suite 100, Sacramento, CA 95833.

AAUWSF Board

President

Cathy Corcoran
CorcoranCF@gmail.com
 415) 341-0206

Legal Advocacy VP

Barbara Spencer
barbaracspencer@gmail.com
 415) 221-6690

Education Fund VP

Mary Suter
marSuter@yahoo.com
 415) 665-1185

Co-Program VP's

Andrea Laudate
mamalaudate@yahoo.com
 415) 864-6789

Peggy Kavounas
pkavounas@aol.com

Membership

Nancy Shapiro
nancy.shapiro@comcast.net
 415) 731-2654

Secretary

Kelly Joseph
kelly.wysinger@sbcglobal.net

Treasurer/Finance

Kathe Traynor
ktraynor@aol.com
 415) 665-3212

Avanti Editor

Corrine Sacks
cpsacks@yahoo.com
 415)292-4130

Co-Public Policy

Sheila Bost
wawonast@earthlink.net
 415)664-4985

415) 626-4110

Roberta Guise

(415) 420-6276
roberta@guisemarketing.com

Website

Nancy Shapiro
nancy.shapiro@comcast.net
 415) 731-2654

Silver Jubilee Fund Chair

Pat Camarena
tapPat157@aol.com
 415) 285-7589

Tech Trek

Elaine Butler
ElaineButler124@Comcast.net
 415) 826-3172

Michelle Mammini

415)346-9114
mmammini@pacbell.net

Hospitality

Marilyn Leal
mleal@mac.com

May 2013

Sun	Mon	Tue	Wed	Thur	Fri	Sat
			1	2	3	4
5	6	7	8	9	10	11
12	13	14	15	16	17 Afternoon With Books 1:30 PM	18
19	20 Internat'l Book Group 7:00 PM	21	22	23 Mystery/Ad Book Group 7:30 PM	24	25 Travel Group
26	27	28	29	30	31	

It is our responsibilities, not ourselves that we should take seriously.

Peter Ustinov

**Avanti Editor**

AAUW

San Francisco Branch

P.O. Box 31405

San Francisco, CA 94131-0405

Address Correction Requested

The American Association of University Women (AAUW), founded in 1881, is the nation's leading organization advocating equity for women and girls. It has a national membership of 150,000. People of every race, creed, age, sexual orientation, national origin, and level of physical ability are invited to join.

AAUW California was launched in San Francisco in 1886 and began lobbying immediately. Check out our website www.aauwsf.org



San Francisco Inc. (CA) Branch

AAUW advances equity for women and girls through advocacy, philanthropy, education, and research

Marie Curie & AAUW

The year was 1919. Europe had been ravaged by World War I and radium was far too expensive for a scientist of modest means to afford for experiments. This was true even for one as famous as Madame Marie Curie. As a result, her groundbreaking research had reached a virtual standstill. Then the AAUW came to the rescue. Members from Maine to California helped raise an astonishing \$156,413, enabling Madame Curie to purchase one gram of radium and continue her experiments that helped her create the field of nuclear chemistry and forever change the course of science. Madame Curie received the Nobel Prize for her work, but was not admitted to the French *Academie des Sciences* until she won an incredible second Nobel Prize...all because she was a woman. More than 75 years later, there are still only three women members.

Educational Foundation

In 1873, a prominent Boston physician, Dr. E.H. Clarke, wrote a book arguing that too much study would give women brain fever and render their children sickly, if they were to have them at all.

The Association of Collegiate Alumnae (AAUW's chief predecessor) fought this contention in 1885 and won, by gathering data from its members to show that they had suffered no ill health from their college and postgraduate education. In 1888, the Western Association of Collegiate Alumnae (founded here in San Francisco) made educational history by establishing the first graduate fellowship for women (given to Vassar graduate Ida Street).

California is still the largest contributor, enabling the Educational Foundation to award nearly \$3 million in grants to women at the dissertation or doctoral level, and to those pursuing career-related or community-based projects.

Legal Advocacy Fund

Founded in 1981, the Legal Advocacy Fund (LAF) works to achieve equity for women in higher education by recognizing indicative efforts to improve the climate for women on campus; by offering assistance to women faculty, staff, and students who have grievances against colleges and universities; and by supporting sex discrimination lawsuits.

The LAF Board only approves support of cases which are currently involved in litigation, and that have the potential to set legal precedent.

The Legal Advocacy Fund's annual Progress in Equity Award recognizes indicative and replicable college and university programs.